

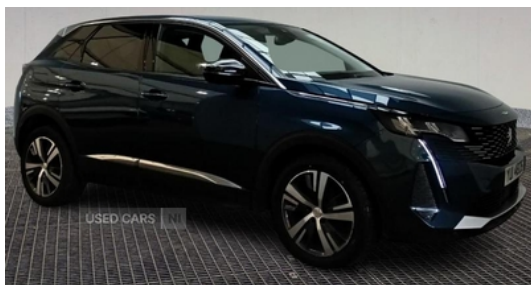


67 Moorfield Road Trillick Omagh, TRILLICK, BT783TX
MARTIN: 07714127571 | JACQUI: 07912505570

Peugeot 3008 1.5 BlueHDi Allure 5dr | May 2022

NI CAR FROM NEW NO TARIFF OR VAT TO ROI

£15,950



2022 PEUGEOT 3008 1.5 BLUEHDI ALLURE

BLUE 5 DOOR HATCHBACK

DIESEL MANUAL

37949 MILES WARRANTED

FULL PEUGEOT SERVICE HISTORY

* KEY FEATURES INCLUDE *

- SATELLITE NAVIGATION
- REVERSE ASSIST CAMERA
- HALF LEATHER INTERIOR
- PARKING SENSORS
- REMOTE CENTRAL LOCKING (2 KEYS)
- ALLOY WHEELS (UNMARKED)

* IMMACULATE GRADE 1 CAR THOUGHOUT *

* PRICED A £15950 *

* NI CAR FROM NEW, NO IMPORT TARIFF OR VAT TO PAY ON EXPORT TO ROI *

* FINANCE AVAILABLE *

* FREE NATIONWIDE DELIVERY *

* VRT TO SOUTH IS 4621 EUROS *

Miles:	37949
Fuel Type:	Diesel
Transmission:	Manual
Colour:	Blue
Engine Size:	1500
Tax Band:	Petrol/Diesel (£195 p/a)
Body Style:	Sport utility vehicle
Insurance group:	21E
Reg:	YUI4826

Technical Specs

DIMENSIONS	
Length:	4447mm
Width:	1841mm
Height:	1620mm
Seats:	5
Luggage Capacity (Seats Up):	520L
Gross Weight:	1980KG
Max. Loading Weight:	551KG
PERFORMANCE & ECONOMY	
Fuel Consum. (Combined):	61.4MPG
Fuel Tank Capacity:	53L
Number Of Gears:	6 SPEED
Top Speed:	119MPH
Acceleration 0-100 km/h:	10.8s
Engine Power BHP:	128.7BHP

Vehicle Features

1/3 to 2/3 split folding rear seats, 2 cupholders in front centre console, 2 cupholders in rear armrest, 2 x Rear reading spotlights, 2x Rear coat hooks, 3D connected navigation with 10" HD touchscreen, 3x Front optimised safety headrests and rear retractable headrests with height adjustable, 3x Isofix child seat fittings in the front passenger and outer rear seats, 3x Rear three-point retractable seatbelts with force limiters in the outer rear seats, 4 Grab handles retractable and damped, 6 speakers radio with mp3 compatible, 12V Sockets in dashboard, 180 degree colour reversing camera, ABS (Anti-lock Braking System) with EBD (Electronic Braking Distribution) and EBA (Emergency Braking Assistance), Adaptive driver and front passenger airbags with passenger airbag deactivation function, apple carplay and android auto, Automatic door locking when moving off, Automatic hazard light activation upon heavy brake application, Automatic triggered rear windscreen wiper in reverse gear, Black rubber side window trim, Black with chrome detailed front wing trim, Blue ambient lighting for connecting zone, Blue ambient lighting to headup instrument panel, Bluetooth telephone facility, Body colour door handles, Body colour rear roof spoiler with stainless steel edging trim, Body colour roof, Body protectors (bottom of front and rear bumpers + wheel arches + protection at bottom of doors) in black, Brumeo fabric trimmed door armrests, Carbon effect Dashboard, Centre front armrest with butterfly wing opening and illuminated storage compartment, Chrome frameless 'Classic' grille, Chrome rear bumper facia, DAB Digital radio, Dark tinted rear side windows + tailgate window, Diamond Black door mirror shells, Door mirror mounted LED courtesy floor lighting, Drive modes select (Eco, Driver and front passenger side airbag, Driver seat lumbar adjustment, Driver seat manual adjustment (longitudinal and back rest angle), Driving Time Warning (DAA1), Dual zone automatic climate control, Dynamic stability control and electronic anti-skid system, Eco LED headlights, Electric child locking functionality on rear windows and doors, Electric folding door mirrors with exterior courtesy LED lighting, Electric operated/heated door mirrors, Electric parking brake, Electric power steering with reach and rake adjustable steering column, Electronic immobiliser, Emergency services call system, Extended Traffic sign recognition, Exterior temperature indicator with ice warning, Flocked glovebox interior, Front ambient lighting, Front and rear curtain airbags, Front and rear door and sill protectors with polished stainless steel insert, front and rear door panel finish, Front bumper lower trim in Silver, Front interior light with 2 reading spotlights and rear interior light with timer, Front parking sensors, Front passenger seat manual adjustment (longitudinal and back rest angle), Front seat back map pockets, Front three point retractable seatbelts with pretensioners and force limiters, Front ventilated disc brakes and rear disc brakes, Front windscreen wiper with magic wash cleaning system, Gear shift indicator, Gloss black B and C pillar and aerodynamic deflector trim, Gloss black front bumper air scoops, Gloss black rear cluster connecting strip, Gloss black

windscreen trim, Headlights left on audible warning, Heated rear windscreen with integrated antenna, Height adjustable front seats, Hill start assist, Illuminated glovebox, Individual left and right controls in boot for seat folding, Keyless Start, key operated exterior door lock from the left hand door, Leather steering wheel with detail stitch, LED daytime running lights, LED front indicator, LED interior lighting in storage spaces and load area, LED rear number plate lighting, LED roof interior lighting, LED side indicator lights integrated into door mirrors, LED third brake light, Mirror screen with mirror link, Multi function trip computer, normal and sport), One touch electric front/rear windows with pinch protection, Perimetric and volumetric alarm with lift and tilt sensor, PEUGEOT i-Cockpit with 10" high definition capacitive touchscreen, Peugeot i-cockpit with compact multi-function sports steering wheel, PEUGEOT i-Cockpit with configurable 12.3" Head-up digital instrument panel, Programmable cruise control and speed limiter, Puncture repair kit including compressor, Rear bench seat with central armrest and ski hatch, rear cabin and load area, Rear centre console ventilation system, Rear LED Peugeot signature 'Claw Effect' lights, Rear parking aid, Rear side wing doors, Remote control central locking with two plip keys, Roof lining - Salin light grey, Safety plus pack with high beam assist - 3008, Satin chrome dashboard trim, Satin chrome digital instrument panel and touchscreen trim, Satin chrome interior door handles, Satin chrome scorpion's tail and toggle switch trim, sealant cartridge and towing eye, Seatbelt not fastened audible and visual alert for front seats, Seatbelt unfastened on the move audible and visual alert for front and rear seats, Single front passenger seat, Speed limit recognition and recommendation, Stainless steel roof arches, Stop/start function, Two position boot floor, Two tone horn, USB socket, Visibility pack - 3008, Voice recognition